



DENTiCARE Smart Sonic Toothbrush

Model No.: QT-1741

User Manual



Smart Sonic Toothbrush

Changes or modifications not expressly approved by the party responsible for compliance could void the user's authority to operate the equipment.

This equipment has been tested and found to comply with the limits for a Class B digital device, pursuant to Part 15 of the FCC Rules. These limits are designed to provide reasonable protection against harmful interference in a residential installation. This equipment generates uses and can radiate radio frequency energy and, if not installed and used in accordance with the instructions, may cause harmful interference to radio communications. However, there is no guarantee that interference will not occur in a particular installation. If this equipment does cause harmful interference to radio or television reception, which can be determined by turning the equipment off and on, the user is encouraged to try to correct the interference by one or more of the following measures:

- Reorient or relocate the receiving antenna.
- Increase the separation between the equipment and receiver.
- Connect the equipment into an outlet on a circuit different from that to which the receiver is connected.
- Consult the dealer or an experienced radio/TV technician for help

This device complies with part 15 of the FCC rules. Operation is subject to the following two conditions (1) this device may not cause harmful interference, and (2) this device must accept any interference received, including interference that may cause undesired operation.

IMPORTANT NOTICE:

Read all instructions carefully before use and save it for future reference.

Danger

Keep the charging base away from water. Do not place or store it over near water contained in a bathtub, washbasin, etc. Do not immerse the charging base in water or any other liquid. After cleaning and make sure the charging base is completely dry before connect it to the mains.

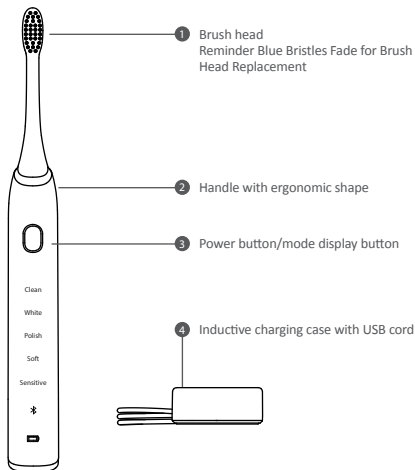
Warning

- Check the USB cord before you connect the local mains.
- Never use the charging base if it is damaged in any way. If the USB cable is damaged, always have it replaced with one of the original type in order to avoid a hazard.
- If the appliance is damaged in any way (included brush head, toothbrush handle), stop using it.
- Do not use the charging base near heated surface and Keep the appliance away from strong electromagnetic field when charging.
This appliance can only be used by children aged from 18 years old and above and by persons with reduced physical, sensory or mental capabilities or lack of experience and knowledge if they have been given supervision or instructions concerning use of the appliance in a safe way and if they understand the hazard involved. Cleaning and user maintenance shall not be made by children unless they are older than 10 and supervised. Keep the appliance and its cable out of reach of children aged less than 10 years.
Children shall not play with the appliance.
- Occur tickling or slight bleeding upon first use, this is normal status. It's ease after 2 days and disappear absolutely within 1 or 2 weeks.

Caution

- Do not clean the brush head, handle and charging base in the dishwasher.
- Do not use the toothbrush in the bath or shower.
- If you had oral or gum surgery in the previous 2 months, consult your dentist before using it.
- If you have medical concerns, consult your doctor before you use the appliance.
- The appliance complies with the safety standard for electromagnetic devices. If you have a pacemaker or other implanted device, consult your doctor before use.
- This appliance has only been designed for cleaning teeth, gums and tongue. Do not use it for any other purpose.
- The toothbrush is a personal care device, suggest to use for use on multiple patients in a dental practice or institution.
- Stop using a brush head with crushed or bent bristles. Replace the brush head every 3 months or sooner if signs of Bristles Fade appear.
Do not use other brush heads instead of the ones recommended by the manufacturer.
- Supervise children while they are brushing until they have established good brushing habits.

Product Components

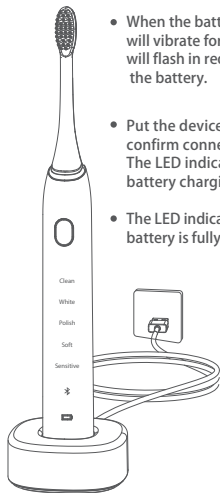


Smart Sonic Toothbrush

Model No	1741-08
Waterproof	IPX7
Function Operation	Button Press
Outlook	Main body material: PC+ABS+UV Painting
Product Size	Main device : 27.8*27.8*248.6mm Charging base: 65.6*65.6*26.3mm
Product Weight	Main body about 115g Charging Base: 65g
Color	Black, White
Charging Type	Wireless Charger
Charging Time	About 8 hours
Battery	Lithium rechargeable Battery
Capacity	800mAh
Battery Life	About 1 month (if use 4 minutes everyday)
Brush Modes	5 different modes, each mode will be lighted up when relevant mode function is on Clean mode: 34800 brush strokes per minute White mode: 33000-40000 brush strokes per minute Polish Mode: 35000 brush strokes per minute Soft mode: 33000 brush strokes per minute Sensitive mode: 28200 brush strokes per minute
Package Contents	2 Brush head 1 Handle with ergonomic shape 1 Wireless Charger 1 User Manual 1 Gift Box

Battery Charging

- Charge for above 12hrs before first use. Please understand that wireless charging is comparably slow for the battery charging.



- When the battery power is low, the device will vibrate for 4 times and the LED indicator will flash in red to remind the user to charge the battery.
- Put the device into charging base and confirm connect power source correctly. The LED indicator flash in white during battery charging.
- The LED indicator light in white color when battery is fully charged.

Attention:

1. Don't charge the Toothbrush by computer.
2. Don't charge the the Toothbrush on Metal desktop.
3. Guarantee the charging time is around 8 hours every time.

Functions of Smart Toothbrush

Clean

The ultimate in the plaque removal

White

Whitening mode of 2 minutes to remove surface stains, plus an additional 30 seconds to brighten and polish your front teeth.

Polish

Dental polishing, whiten the teeth

Soft

Extra gentle mode for sensitive teeth and gums

Sensitive

Gentle teeth and gum cleaning

34800 times/minute

33000-40000 times/minute

35000 times/minute

33000 times/minute

28200 times/minute



Clean

White

Polish

Soft

Sensitive

Instruction for Use



01

Put brush head into toothbrush body and make a certain gap between head and body



02

Take some toothpaste on the wet bristle



03

Smudge the toothpaste to teeth before use
(Notice: launch toothbrush after put into mouth)



04

Change the cleaning area based on briefly pause during the brushing cycle (Notice: no need to left and right or upper and down to move after launched)

APP Operation

Your Teethcare toothbrush is Bluetooth enabled and allows you to achieve superior oral health care with the Teethcare app.

Using the Teethcare app will help you to improve your oral health care habits. It gives you real-time feedback while brushing, informs you if you missed any spots when brushing, tracks your brushing behavior over time and provides useful tips and tricks for your healthiest mouth ever. In order to fully benefit from your Teethcare, we advise you to follow these steps:

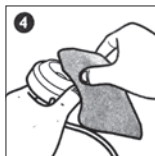
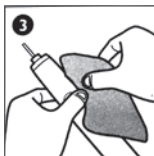
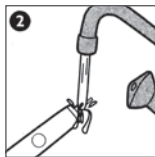
Connecting your toothbrush

1. Download the Teethcare app from the Apple App Store or Google Play Store.
2. Confirm Bluetooth is switched on on your mobile device before you open the app. Check the settings on your mobile device to switch on Bluetooth.
3. Open the Teethcare app.
4. To connect the toothbrush to the app, follow the Teethcare app instructions displayed on your mobile device, find the correct device name and choose it to connect.



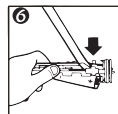
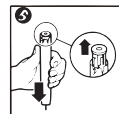
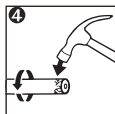
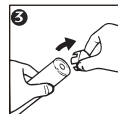
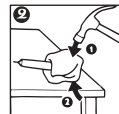
Note: For optimal data capture, keep your mobile device close during brushing.

Cleaning Your Smart Toothbrush



Cleaning - Clean the Smart toothbrush periodically. Rinse the handle and the brush head. Wipe down all surfaces with a soft cloth and mild soap, if desired. Do not use sharp objects to clean. Do not clean the brush head, handle, charging base in the dishwasher.

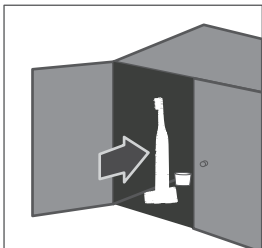
Environment



Do not throw away the appliance with the normal household waste at the end of life, but hand it in at an official collection point for recycling.

By doing this, you help to preserve the environment. The built-in rechargeable battery contains substances that may pollute the environment. Always remove the battery before you discard and hand in the appliance at an official collection point. Removing the rechargeable battery. This process is not reversible. To remove the recharge battery, you need a flat-head (standard) screwdriver. Observe basic safety precautions when you follow the procedure above. Be sure to protect your eyes, hands, fingers and the surface on which you work.

Storing Your Smart toothbrush



Storing- If you are not going to use it for an extended period of time, unplug the charging base, clean all parts and store them in a cool, dry place away from direct sunlight.

Guarantee Restrictions

The terms of the international guarantee do not cover the following:

- Brush head.
- Damage caused by misuse, abuse, neglect, alterations to unauthorized repair.
- Normal wear and tear, including chips, scratches, abrasions, discoloration or fading